

# Sorority Recruitment Guide

PENN STATE PANHELLENIC  
ASSOCIATION 2019



# Barn Parties! Formals!

- ★ 15 minutes from campus
- ★ Starting at \$15 per person
- ★ Food available
- ★ Built-in sound system
- ★ You provide refreshments, decorations and transportation, we take care of everything else!

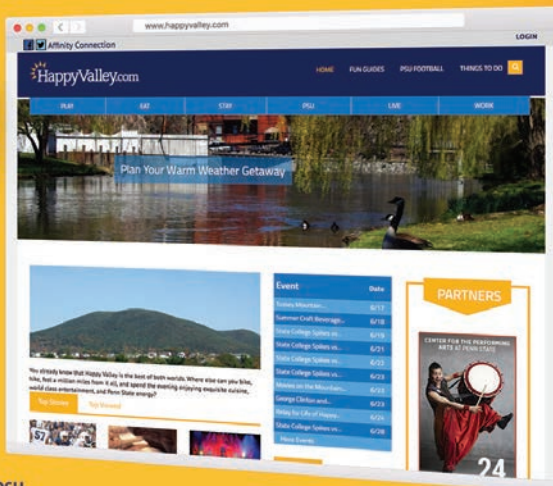


godspeedhostel.com  
814.554.0024



## Find FUN.

All the best events,  
accommodations, dining,  
and attractions, plus our  
weekly Top Picks for Fun.



@happyvalleypsu



@happyvalleypsu



HappyValley.com

Sign up today to receive  
specials, promotions  
and giveaways!

# Welcome!

We are so excited that you are interested in Panhellenic Recruitment!

On behalf of our Panhellenic Association, Executive Board, and our Panhellenic chapters here at Penn State, I am thrilled to welcome you to one of the largest and strongest sorority communities in the country! We are so proud to serve as the home for 16 Panhellenic sororities and three Associate Panhellenic Chapters—all of which have been a part of students' experiences and memories at Penn State since the 1870s.

With over 4,000 members, we strive for Panhellenic to bring positivity and enrichment to all. We want every member to excel in scholarship, leadership, and philanthropy while also creating lifelong friendships. Joining a sorority is unique because by accepting a bid, you are making a lifelong commitment to your chapter, its values, and your fellow sisters worldwide. The relationships and opportunities that come along with becoming a sorority woman have been an incredible part of my time here at Penn State.

In this booklet, you will find information detailing all sorority chapters here at Penn State. Please review this information about the individual chapters, as well as other helpful sections. As you visit the different sororities, be sure to ask questions to learn about each one and what makes them unique. Also, consider your own values and interests when you narrow down your choices! Just as each sorority hopes to welcome girls who share their values and interests, we want you to find a chapter that can support and encourage your own personal values. Finally, make sure to explore all of your options, as each sorority has so much to offer.

I am so excited for you to begin this process and look forward to seeing you at orientation!

We Are!

Courtney Rodrigues

President, 2018 Panhellenic Council

[president@pennstatephc.org](mailto:president@pennstatephc.org)



# Table of Contents

WELCOME .....	3
LETTER FROM THE VP FOR MEMBERSHIP .....	5
SORORITY LINGO .....	6
WHY JOIN A SORORITY .....	8
TRADITIONAL EVENTS .....	10
SORORITY RECRUITMENT INFO .....	15
PANHELLENIC SORORITY CHAPTERS .....	25
ASSOCIATE CHAPTERS .....	43
PANHELLENIC EXECUTIVE BOARD .....	45



TO SIGN UP FOR PANHELLENIC RECRUITMENT,  
GO TO [WWW.PENNSTATEPHC.ORG](http://WWW.PENNSTATEPHC.ORG)  
REGISTRATION DEADLINE IS  
MONDAY DECEMBER 31 AT 5 PM.





# Letter from the VP for Membership

Dear Future Panhellenic Women,

Often it is hard to recognize moments in life that profoundly change who we are as people. I can honestly say that one of these moments was when I received my bid. I joined a sorority as a way to find a group of friends and help find my place at such a large university, as is very often the case. However, I could not have imagined how joining a sorority would impact me so strongly and help me become the best version of myself. I have been able to learn and grow immensely, all while making lifelong friends and so much more.

On my bid day, I remember looking around the sorority suite and being so excited to get to know all of the sisters that I had joined. Everyone, both new and current members, shared the same excitement and enthusiasm to become friends. Before I knew it, these girls became my family. Never has there been a time where I have felt alone; my sisters are always there for me, through both the good and the bad times. I never thought I would be able to make friends so quickly that I would cherish so greatly.

Joining a sorority has not only allowed me to make friendships in my own chapter, but has allowed me to form many connections with girls in other chapters, as well. When I reflect on my time in college, I have Greek Life to thank for helping me find near and dear friends that I will have forever.

Not only will you make unbreakable friendships through Greek Life, but the opportunities for involvement in both leadership and philanthropy are endless. Both of these aspects have truly shaped me into the woman I am today. When I joined my sorority, the girls I met empowered me and helped me to realize my full potential to become a leader and a better person. Without their encouragement and support, as well as all of the opportunities available in the Greek community, I would have never had these impactful experiences as a part of my Penn State story.

Sorority Life has brought so many incredible and truly meaningful people and opportunities into my life. I am so thankful I took a chance and made the decision to Go Greek! My advice to you is to go into sorority recruitment knowing you can experience all of these amazing things for yourself. As you go through the recruitment process, always remember to keep an open mind, be yourself, stay true to your values, and branch out to meet all of the people you can! Being a Panhellenic woman is about forming friendships with others to be a part of something greater than yourself. I cannot wait to introduce you to all of the great opportunities that being a Panhellenic woman has to offer and help you to create your own Penn State story. Go Greek!

Sincerely,

Brooke Martinez

Vice President for Membership, 2018 Panhellenic Council  
membership@pennstatephc.org

# Sorority Lingo

**ACTIVE MEMBER** - a fully initiated undergraduate member of a fraternity or sorority.

**BID** - an invitation to join a fraternity or sorority. You will receive your bid card on Bid Day, Monday, January 28, upon completion of all rounds of recruitment.

**CHAPTER** - The local organization of undergraduate students on a campus recognized by the university and the National or International organization.

**CONTINUOUS OPEN BIDDING** - An opportunity for chapters who are not at total to extend bids to women who did not join a sorority during Primary Recruitment.

**INTERFRATERNITY COUNCIL (IFC)** - The governing body of the 37 fraternities at Penn State.

**INITIATION** - A formal ceremony during which new members become active members of the chapter.

**LEGACY** - an immediate family member of an initiated member, generally sister or daughter. Some sororities also recognize grandchildren, stepsisters, and stepdaughters.

**MULTICULTURAL GREEK-LETTER COUNCIL (MGC)** - The governing body of the 14 culturally-based social fraternities and sororities at Penn State.

**NATIONAL PANHELLENIC COUNCIL (NPHC)** - The governing body of the two historically Black fraternities and sororities at Penn State.

**NATIONAL PANHELLENIC CONFERENCE (NPC)** - The umbrella organization for 26 national and international social sororities

**NEW MEMBER** - A person who accepts a bid from a fraternity or sorority chapter

# Sorority Lingo

**NEW MEMBER EDUCATOR** - The individual who is the liaison between the new members and the chapter. This individual is responsible for implementing and monitoring the new member program and preparing the new members for initiation.

**NEW MEMBER PERIOD** - A period of six weeks prior to initiation when a new member learns about her sorority's values and expectations, and develops relationships within that organization

**PANHELLENIC ASSOCIATION** - The governing body of the 16 NPC sororities and the three associate chapters at Penn State

**PANHELLENIC EXECUTIVE BOARD** - The eleven members of the Panhellenic Exec lead the Penn State Panhellenic Council. They are sorority members who have disaffiliated during Recruitment to oversee the process.

**PI CHI** - An active sorority woman who has chosen to service as recruitment counselor to assist and counsel Potential New Members during the Primary Recruitment process.

**POTENTIAL NEW MEMBER (PNM)** - A prospective new member of a sorority.

**PRIMARY RECRUITMENT** - Designated period in the Spring when Potential New Members and Panhellenic sororities get to know each other through parties. Primary Recruitment is a mutual selection process, which means that both the potential new members and the individual sororities are making choices. Potential new members will make decisions regarding chapters they want to revisit, and the sororities will make decisions regarding the women they want to invite to their parties.

**RECOMMENDATION** - A letter written by a sorority alumna introducing and recommending a Potential New Member into her sorority. These are not required.



# Why Join a Sorority

Penn State has one of the largest Panhellenic communities in the country with 19 sororities. Every sorority offers lifetime friendships and countless opportunities for leadership, community service, philanthropy—including the IFC/Panhellenic Dance Marathon (THON)—fun, and so much more! Sorority life is an excellent way to make your Penn State experience everything you want it to be. No matter which sorority you join, you are guaranteed to make lifelong friendships, have the opportunity to participate in everything Penn State offers, and create memories that last forever. Read from the current Panhellenic women and recent alumnae about their Penn State sorority experience.

**NETWORKING** – Being a member of a sorority not only connects you to the sisters of your chapter and thousands of other sorority and fraternity members at Penn State, it connects you to the hundreds of thousands of women affiliated with your sorority's national organization. With that many connections, joining a sorority can bring many opportunities right to you!

**SERVICE AND PHILANTHROPY** – Penn State's most notable philanthropy, the Penn State IFC/Panhellenic Dance Marathon (THON), was started by fraternity and sorority members and continues to be greatly supported by the fundraising and philanthropic efforts of the fraternity and sorority community. In addition to THON, each sorority has its own national philanthropy for which it holds events and fundraisers.

Service is an important aspect of sorority life. Each sorority has service-hour goals that members are expected to reach. Sororities can be seen helping first-years move in, working blood drives, hosting events for the community, participating in other service projects around campus, and most importantly, supporting each other's national philanthropies.

**SCHOLARSHIP** – All chapters have a scholarship program that encourages academic development among its members. In fact, members often say that being in a sorority substantially enhances their ability to organize time and meet responsibilities. Sister-to-sister tutoring, encouraged study hours, incentives, and minimum GPA requirements are all ways chapters help their members succeed academically. The GPA for all sororities is consistently higher than the average for all women at Penn State.

**LEADERSHIP** – Sorority membership offers more opportunities for leadership than many other organizations. Many sorority women continue to say that their organizations helped them enhance their leadership skills as they assumed positions of responsibility.

Spring 2018 GPA

Panhellenic Women: 3.40

All Women's GPA: 3.27



These positions can be within an individual chapter or through Panhellenic as a whole, such as positions non junior Panhellenic, the Greek Week Overall Committee, or Greek Sing committee positions. Additionally, Panhellenic women participate in sports, honor societies, and student government. Moreover, they hold employment positions and assist with research.

**SOCIAL** - Another great part about being in a sorority is the wide variety of friendships you will make. When you look back on your college experience, your most cherished memories are both a reflection of what you did and the incredible women with whom you shared those moments.

## Penn State Office of Fraternity and Sorority Life Information

**WE ARE HERE FOR YOU!**

The Office of Fraternity and sorority Life supports the active and alumni members of the Penn State Fraternity and Sorority community and provides staff, events, and resources to achieve this purpose and help the leadership fulfill their mission

**Office:** 215 HUB-Robeson Center

**Website:** [greeks.psu.edu](http://greeks.psu.edu) | **Email:** [greeks@psu.edu](mailto:greeks@psu.edu) | **Phone:** (814) 863-8065

**Steve Veldkamp**

Special Assistant to the Vice President; Interim Director for the Office of Fraternity and Sorority Life

**Lizzie Esterline**

Administrative Support Assistant

**Jennifer Morocko**

Administrative Support Assistant

**Christina Skopinich**

Graduate Assistant

**Karina Pazmino**

Administrative Support Assistant

**Danelle Del Corso**

Assistant Director

**Clark Tieman**

Graduate Intern

**Salem Awwad**

Assistant Director

**Chad Warrick**

Assistant Director; Panhellenic Advisor

**Evan Ditty**

Assistant Director, Training and Development

# Traditional Events





# Homecoming

Penn State Homecoming is one of the traditional events that all sororities and fraternities participate in each year. Homecoming is a week of fun, football, alumni, performances, and parades. Sororities team up with fraternities to participate in a number of activities during the week, including a talent show and a parade to unite Penn State. For the parade, each sorority/fraternity pair makes a float based on a theme that they choose. The floats are designed and built by the fraternity and sorority teams, and they take great pride in making them! The week culminates with a football game on Saturday. Homecoming is a celebration of Penn State tradition that sororities participate in to the fullest!



# Greek Sing

Greek Sing is another traditional event where sororities and fraternities showcase their talents and compete by performing musicals. Each year Greek Sing has a theme, last year's being Award Winning musicals! This showcase builds community among all fraternities and sororities and is an excellent way for students to volunteer to represent their organizations. The primary purpose of Greek Sing is to raise money for the Gayle Beyer's Scholarship Fund, named after a woman who demonstrated great dedication and true allegiance to the sorority community as a collegian and Panhellenic advisor. Each year, the Gayle Beyer's Scholarship is given to Panhellenic women who demonstrate commitment and excellence to the Penn State Panhellenic Association.



# THON

The Penn State IFC/Panhellenic Dance Marathon (THON) is the largest student-run philanthropy in the world! Money is raised in a yearlong effort supporting The Four Diamonds Fund at the Penn State Hershey Medical Center to conquer pediatric cancer. In February, the fundraising culminates in a 46-hour, no-sitting, no-sleeping dance marathon. The dancers are selected to participate from their individual organizations. IFC/Panhellenic Dance Marathon weekend is a fun-filled two days with events for kids, dancers, families, supporters, and Penn State students. The IFC/Panhellenic Dance Marathon raised over \$10 million in 2018 and has raised over \$156 million since the Four Diamonds Fund became the sole beneficiary of fundraising in 1977.



The IFC/Panhellenic Dance Marathon started in 1973 as a philanthropy initiated by Penn State's fraternities and sororities. From its small beginnings in the HUB, it is now held in the Bryce Jordan Center and has grown to incorporate all student organizations. However, fraternities and sororities are proud that we continue to appear among the top fundraisers of any of the hundreds of IFC/Panhellenic Dance Marathon Organizations. We are proud of our service to THON and continue to fight to find a cure. FTK! (For the Kids!)

For more information on the IFC/Panhellenic Dance Marathon, visit [www.thon.org](http://www.thon.org).

# Joining a Sorority & THON

Each sorority raises the funds for IFC/Panhellenic dance Marathon. Fundraising efforts include letter-writing campaigns to friends and family and canvassing trips. Students travel to the different hometowns of selected sisters to ask for donations to THON. Most of the sororities also sponsor a Four Diamonds child who is being, or was, treated at the Hershey Medical Center. They build close relationships with the child and their families to provide moral support throughout the year.

While individual participation of sorority members in THON isn't mandatory, it is strongly encouraged as a wonderful way to bond with sisters, develop leadership and fundraising skills, and to give back to the larger Penn State community. It is truly unique to be able to be a part of the largest student run philanthropy in the world!



## THON CALENDAR

- THON 5K: OCTOBER 21, 2018
- 100 DAYS 'TIL THON: NOVEMBER 7, 2018
- FAMILY CARNIVAL: DECEMBER 2, 2018
- THON WEEKEND: FEBRUARY 15-17, 2019





# Greek Week

Greek Week takes place in April and consists of various activities that promote unity across all Penn State sororities and fraternities. These activities and events emphasize the positive facets of the fraternity and sorority community while building meaningful relationships between participants and with the greater Penn State and State College communities. Some of the most popular Greek Week traditions include the Spring Carnival, athletic events, and more.

# Sorority Recruitment Info



# Recruitment Schedule

To register for formal recruitment, go to **WWW.PENNSTATEPHC.ORG**. The last day to register is **Monday December 31 by 5 p.m.!** The registration fee is \$40.

## **INVOLVEMENT FAIR** (Monday, October 2 from 7-10 p.m. in Heritage Hall, HUB)

At the Involvement Fair, you will have the chance to learn more about sorority life. The Panhellenic Association will have a table to answer any questions you might have about sorority recruitment or registration. In addition, individual chapters will have tables so you can begin to get an insight into the Panhellenic community at Penn State.

## **ORIENTATION** (Friday, January 18)

At orientation, you will learn more about the recruitment process and gain all the information you need to know to have the best experience possible! Potential New Members will break into Panhellenic Counselor, "Pi Chi", groups. These are the groups of approximately 40 Potential New Members who will go through the recruitment process together. This orientation is mandatory. You will receive an email confirming your exact date, time, and location of your orientation session upon registration.

## **OPEN HOUSES** (January 19-20)

During these two days, you will visit all 16 Panhellenic sororities and three associate chapters at Penn State for 15 minutes each with your Pi Chi group.

## **FIRST ROUNDS** (January 21-22)

During first rounds, you will visit a maximum of 13 chapters for 30 minutes each. The chapters will focus on highlighting their international philanthropy. At the end of first rounds, you will select a maximum of eight chapters to visit during second rounds.

## **SECOND ROUNDS** (January 23-26)

During second rounds, you will visit a maximum of eight chapters for 40 minutes. You will attend these chapters and see a documentary about each chapter's sisterhood. On the final evening of second rounds, you will select a maximum of two chapters to visit on preference day.

## **PREFERENCE DAY** (Sunday, January 27)

On preference day, you will visit a maximum of two chapters, spend 50 minutes with each sorority and participate in their preference ceremonies. These ceremonies present the values and ideals held by the chapter. You will get to tour the sorority floor and there will be food and beverages provided. At the end of the night, you will submit your final ranking of the sororities you attend.

## **BID DAY** (Monday, January 28)

Potential New Members will meet with their Pi Chi group shortly before Bid Day begins. You will be given your invitation, or bid, to join a sorority. Once everyone receives their bids, New Members will meet their New Member Classes and be welcomed by their chapters. Then, you will go back to the sorority suite to meet everyone and participate in fun bid day activities.



# What to Wear

## **ORIENTATION (Friday, January 18)**

The dress attire for recruitment orientation is very casual and comfortable, such as leggings, jeans, and t-shirts.

## **OPEN HOUSES (January 19-20)**

For the first two days of recruitment, Potential New Members will be **REQUIRED** to wear the t-shirt provided to them at orientation. This t-shirt may not be altered. You can wear jeans or pants on the bottom and any kind of shoes. Remember to keep it appropriate and comfortable because you will be walking to all the sorority suites.

## **FIRST ROUNDS (January 21-22)**

Potential New Members should dress casually, but neatly. Try to wear nice shoes or booties and a cute top and bottom. Try to stay away from low cut tops and really short bottoms. Look nice, but also remember to be comfortable.

## **SECOND ROUNDS (January 23-26)**

For second rounds, attire is dressier with skirts, dresses, or nice dress pants or jumpsuits. Nice booties or boots with stockings are recommended. Keep in mind it will be the middle of Winter!

## **PREFERENCE DAY (Sunday, January 27)**

Potential New Members should wear cocktail-type dresses. Heels and nice jewelry are recommended. Dress as you would for a semi-formal event.

## **BID DAY (Monday, January 28)**

The dress attire for bid day is casual. You can wear jeans or pants and a t-shirt or tank. Please remember to bring a jacket. Once you meet your sorority, you will be given a shirt to wear for the rest of the day's celebrations

*\*Please keep in mind that it will be cold outside during Primary Recruitment and to dress appropriate for the weather.\**

## **FIRST ROUNDS**



## **SECOND ROUNDS**



## **PREFERENCE DAY**



Visit our *Pinterest* page for more outfit  
selection ideas!

[www.pinterest.com/pennstatephc](http://www.pinterest.com/pennstatephc)

# Policies & Rights

## MANDATORY ATTENDANCE POLICY

The Panhellenic Association has a mandatory attendance policy during recruitment. This means that a Potential New Member is required to attend all chapter events to which she is invited. Potential New Members may NOT “pick and choose” the chapters they wish to attend on their schedule. If a Potential New Member chooses not to attend a chapter on her event schedule and does not have an excused absence, she will be removed from the recruitment process immediately.

Potential New Members must submit any academic or athletic conflicts to their recruitment counselor no later than January 18 at midnight. Panhellenic encourages chapters to invite back Potential New Members who miss parties due to conflicts, but there is no guarantee that a chapter will invite you back if you have to miss their party.

If a Potential New Member would like to withdraw from the recruitment process, she will need to go to the Panhellenic Office in 217 HUB to fill out an official withdrawal form.

## SIGNING AND ACCEPTING A BID

In signing a preference card, a potential new member is making a binding agreement that she will accept a bid from any of those sororities she lists in order of preference on her card. Furthermore, should a woman receive a bid from a sorority and she decides not to join the sorority, she will not be able to join another NPC sorority until the next Primary Recruitment.

## POTENTIAL NEW MEMBERS HAVE THE RIGHT TO...

- The right to be treated as an individual.
- The right to be fully informed about the recruitment process.
- The right to ask questions and receive true and objective answers from recruitment counselors (Pi Chi) and individual sorority members.
- The right to be treated with respect.
- The right to be treated as a capable and mature person without being patronized.
- The right to ask how and why and receive straight answers.
- The right to have and express opinions to recruitment counselors (Pi Chi).
- The right to have inviolable confidentiality when sharing information with recruitment counselors (Pi Chi).
- The right to make informed choices without undue pressure from others.
- The right to be fully informed about the binding agreements implicit in the preference card signing.
- The right to make one's own choice and decision and accept full responsibility for the results of the decision. The right to have a positive, safe, and enriching recruitment and new member/pledging experience.

# Recruitment Behavior

## RULES REGARDING THE RELATIONSHIP OF POTENTIAL NEW MEMBERS AND SISTERS

- A. Potential New Members must attend all scheduled recruitment parties. Without a validated excuse for every absence, you will be removed from the recruitment process.
- B. You must treat every sorority with equal respect. The sorority members must also respect you by not answering phone calls during the recruitment events, talking down about other sororities, etc. If you feel a sister has disrespected you, tell your Pi Chi. Your name will be confidential at all times, but the issue will be addressed.
- C. You MAY NOT “bad mouth” or slander any sorority to any sorority member or other Potential New Members. All opinions should be kept between you and your Pi Chis. It is important for you to make the decision for yourself and keep an open and unbiased mind throughout the entire recruitment process.
- D. Sorority members MAY NOT ask you about other sororities you have visited, whether you are legacy, or about your friends in recruitment. If they do these things, you do not have to answer the questions. Tell your Pi Chi immediately or fill out the Statement of Concern on [www.pennstatephc.org](http://www.pennstatephc.org)
- E. You may not discuss rumors, social functions, hazing, fraternities, stereotypes, etc. with any other Potential New Members or sorority members. The sorority sisters also cannot talk to you about these things. If they do, report it immediately. If they do, report it immediately. If you have any questions pertaining to any of these topics, please go to your Pi Chi for the answers.
- F. You may not accept ANY type of gift (meals, cards, letters, sorority paraphernalia, etc.) before or during the recruitment process.
- G. You may not try to contact sorority members for information about recruitment in ANY way, including, e-mail, Facebook, Twitter, etc. If you have any questions about sorority recruitment, please contact your Pi Chi.
- H. When leaving a recruitment event, you will not be allowed to discuss opinions with other Potential New Members. You may use your “recruitment diary” to write down notes.
- I. YOU MAY NOT ATTEND SOCIAL EVENTS WITH SORORITY MEMBERS. This includes off-campus events, parties, etc. You are not allowed in the fraternity houses between the hours of 8:00 p.m. and midnight before or during the recruitment process.



# Helpful Hints for Sorority Recruitment

Recruitment is a very formal, complicated, and time consuming process. Be sure to budget your time wisely prior to and during sorority recruitment. Make sure that you get plenty of rest and stay focused on your academics.

You will make friends during the recruitment process that you will have for the rest of your time at Penn State, and you will meet your future sisters. You have the power to have a great experience. If you keep an open mind, make your own decisions, form your own opinions and follow the rules, you will end up in a sorority that best fits you.

**PI CHIS** are active sorority women who have chosen to serve as recruitment counselors to assist and counsel Potential new Members through the recruitment process. There will be two or three trained Pi Chis in each group who are there to assist you day or night with unbiased advice and information.



## PENALTIES FOR VIOLATING THE POTENTIAL NEW MEMBER CODE OF CONDUCT

All violations of the Potential New Member Code of Conduct will be addressed by the Panhellenic President and Vice President for Membership. Violations may result in an array of sanctions ranging from a warning to removal from the recruitment process.

## HAZING POLICY

If a member feels that she is being hazed or knows of a hazing incident, she should report it immediately to the Office of Fraternity & Sorority Life. Any Panhellenic chapter found in violation of the Panhellenic Associated Hazing Policy will be subject to investigation and discipline by the Panhellenic Association and will have their Inter/National Headquarters contacted

# Primary Recruitment Tips for Success

**BE YOURSELF.** Do not adopt a new personality just because of recruitment! Each chapter has its own personality and women that could be the perfect fit for you. Sororities are interested in the real you. Be yourself!

**KEEP AN OPEN MIND.** When you receive your schedule back from your Pi Chi's at the beginning of each round, you may receive a schedule different from what you ranked during selections. Don't get discouraged. Each sorority has their own unique members and values, and you will surely find the true fit for you.

**MANAGE YOUR TIME WISELY.** While the week of Primary Recruitment can be an exciting and intense time, women who manage their time will find the week much easier than those who do not! Remember to allow enough time for your meals, homework, and sleep during recruitment.

**ASK ABOUT VALUES.** When you join a sorority you are becoming a member of a lifetime sisterhood. Don't be afraid to ask about the morals and ideas of the chapter to see if they resonate with what you find important.

**GET TO KNOW OTHER WOMEN IN YOUR PI CHI GROUP.** During Primary Recruitment, you will have the opportunity to meet many wonderful sorority women, as well as the other women going through recruitment with you. These other Potential New Members might turn out to be your new sisters, or they might join a different chapter and you'll see them at many sorority community events over the next few years. Having friends in other chapters is a huge part of our Panhellenic values at Penn State.

**STICK WITH IT.** At times recruitment may seem stressful, but have fun with it! This is an opportunity to meet hundreds of great women.

# F.A.Q.

## **DO I HAVE TO REGISTER FOR SORORITY RECRUITMENT?**

Yes, you must register for sorority recruitment on the Panhellenic website at [www.pennstatephc.org](http://www.pennstatephc.org). Upon registration, your information will be collected, you will be assigned to a group, and scheduled for recruitment. Remember, the last day to register is Monday, December 31 by 5 p.m. The registration fee is \$40

## **DO SORORITY WOMEN HAVE FRIENDS IN OTHER SORORITIES AND OUTSIDE OF SORORITY LIFE?**

Yes, many members of sorority life are actively involved on campus in almost any activity you think of inside and outside of the Panhellenic Community. Joining a sorority does not mean losing friends or changing the group of friends you hangout with. It means, building more relationships in and out of sorority life and carving a niche in this huge school.

## **WHAT IF I HAVE CLASS AND HAVE TO MISS A SORORITY RECRUITMENT EVENT?**

You will have to fill out the excused absence sheet and submit it online or to your Pi Chi by January 18 at midnight. If you miss a party without an excuse, you will be removed from recruitment. You cannot enter a party late, so make sure you are on time! If there is ever a personal problem, please confide in your Pi Chi or one of the Panhellenic Executive Board members and a solution will be reached to help with the situation.

## **HOW DO I KNOW WHO MY PI CHI IS AND WHERE DO I MEET HER?**

Registered Potential New Members will meet with their assigned Pi Chis at orientation. You will learn how to get in contact with her and where and when your group will meet every day before recruitment rounds begin.



### **OUTSIDE OF RECRUITMENT PARTIES. CAN I TALK TO SORORITY WOMEN?**

To ensure a fair and pressure-free process, there is a period of limited contact between sorority women and Potential New Members when not at recruitment events. From the day Potential New Members arrive on campus until the end of recruitment, preplanned contact is prohibited between you and sorority women. This includes calls, e-mails, texts, letters, face-to-face communication, social media, etc. This is an extremely important rule. If a sorority member contacts you, she is putting her entire chapter at risk for judicial sanctions and is undermining the spirit of our Panhellenic community. You have the right to a confidential and fair recruitment process.

### **WHEN DO I GET TO LIVE ON THE SORORITY FLOOR?**

Living on the sorority floor is a privilege and not guaranteed. The opportunity to live on the floor will depend on how much space is available, which can vary from sorority to sorority. Many sororities have an application process for people interested in living on the floor. Consult with your chapter's Housing Chair early if this is something you are interested in!

### **HOW MUCH TIME IS NEEDED TO BE INVOLVED IN A SORORITY?**

As a new member, you can expect weekly meetings, community service projects, sisterhood events, and social functions. These activities will continue after initiation to whatever extent you choose. Your experience will be what you make of it – the more you put in the more you will get out!

### **I'M NOT SURE I HAVE ENOUGH MONEY TO PAY FOR SORORITY MEMBERSHIP. SHOULD I STILL GO THROUGH RECRUITMENT?**

Each chapter has financial requirements which Potential New Members should discuss with their parent/guardian before the student pledges a sorority. Financial requirements may include membership dues and additional expenses may arise from purchasing apparel and attending social events such as formals. First semester dues usually average around \$650. Most sororities offer payment plans allowing you to spread your payments throughout the semester. It is important to note that membership fees vary by sorority.



# Greek Alphabet

Α

Alpha

Β

Beta

Γ

Gamma

Δ

Delta

Ε

Epsilon

Ζ

Zeta

Η

Eta

Θ

Theta

Ι

Iota

Κ

Kappa

Λ

Lambda

Μ

Mu

Ν

Nu

Ξ

Xi

Ο

Omicron

Π

Pi

Ρ

Rho

Σ

Sigma

Τ

Tau

Υ

Upsilon

Φ

Phi

Χ

Chi

Ψ

Psi

Ω

Omega



# Panhellenic Sorority Chapters



# Alpha Delta Pi

“We Live For Each Other”

## About Alpha Delta Pi

Nickname: ADPi

Founded: May 15, 1851 at  
Wesleyan College

Colors: Azure Blue and White

Symbol: Lion and Diamond

Philanthropy: Ronald McDonald  
House Charities

National Website: [alphadeltapi.org](http://alphadeltapi.org)

Chapter Website:  
[alphadeltapi.su.com](http://alphadeltapi.su.com)

Instagram: @adpipsu







# Alpha Omicron Pi

"one Motto, one Badge, one Bond,  
singleness of heart"

## About Alpha Omicron Pi

Nickname: AOPi

Founded: January 2, 1897 at  
Barnard College

Colors: Cardinal Red

Symbol: Panda Bear

Philanthropy: Arthritis Research

National Website:  
[alphaomicronpi.org](http://alphaomicronpi.org)

Chapter Website:  
[psu.alphaomicronpi.org](http://psu.alphaomicronpi.org)

Instagram: @aoiipennstate

# AOPi







# Alpha Phi

“union hand in hand”

## About Alpha Phi

Nickname: APhi

Founded: September 18, 1872

Colors: Silver and Bordeaux

Symbol: Phi Bear

Philanthropy: Alpha Phi Foundation

National Website: [alphaphi.org](http://alphaphi.org)

Chapter Website:

[alphaphipennstate.  
wix.com/psugammarho](http://alphaphipennstate.wix.com/psugammarho)

Instagram: [@psu\\_alphaphi](https://www.instagram.com/psu_alphaphi)





# Alpha Xi Delta

“the PEN is mightier than the sword”

## About Alpha Xi Delta

Nickname: AXiD

Founded: April 17, 1893 at  
Lombard College

Colors: Light Blue, Navy Blue, and  
Gold

Symbol: Quill

Philanthropy: Autism Speaks

National Website:  
[alphaxidelta.org](http://alphaxidelta.org)

Chapter Website:  
[psu.alphaxidelta.org](http://psu.alphaxidelta.org)

Instagram: @alphaxipsu







# Delta Gamma

“Do Good”

## About Delta Gamma

Nickname: DG

Founded: December 25, 1873 at the  
Lewis School for Girls

Colors: Bronze, Pink, and Blue

Symbol: Anchor

Philanthropy: Service for Sight,  
Joining Forces

National Website: [deltagamma.org](http://deltagamma.org)

Chapter Website:  
[psu.deltagamma.org](http://psu.deltagamma.org)

Instagram: @deltagammapsu





# Delta Phi Epsilon

"TO BE RATHER THAN TO SEEM TO BE"

## About Delta Phi Epsilon

Nickname: DPhiE

Founded: March 17, 1917 at New York University Law School

Colors: Royal Purple and Pure Gold

Symbol: Unicorn and Equilateral Triangle

Philanthropy: Cystic Fibrosis Foundation (CFF), National Association for Anorexia Nervosa and Related Disorders (ANAD)

National Website: [dphie.org](http://dphie.org)

Chapter Website:

[facebook.com/PSUdphie](https://facebook.com/PSUdphie)

Instagram: [@dphiepennstate](https://www.instagram.com/dphiepennstate)







# Delta Zeta

"Enriching"

## About Delta Zeta

Nickname: DZ

Founded: October 24, 1902 at Miami  
University in Ohio

Colors: Rose and Green

Symbol: Roman Lamp

Philanthropy: Starkey Hearing  
Foundation and Painted Turtle  
Camp

National Website: [deltazeta.org](http://deltazeta.org)

Chapter Website:  
[deltazetapennstate.org](http://deltazetapennstate.org)

Instagram: [@deltazeta\\_pennstate](https://www.instagram.com/deltazeta_pennstate)





# Gamma Phi Beta

"Founded upon a Rock"

## About Gamma Phi Beta

Nickname: Gamma Phi

Founded: November 11, 1874 at  
Syracuse University

Colors: Brown and Mode

Symbol: Crescent Moon

Philanthropy: Girls On The Run

National Website:  
[gammaphibeta.org](http://gammaphibeta.org)

Chapter Website:  
[gammaphibetapsu.  
wix.com/alphaupsilon](http://gammaphibetapsu.wix.com/alphaupsilon)

Instagram: @gammaphipsu

# ΓΦΒ







# Kappa Alpha Theta

## "Leading Women"

### About Kappa Alpha Theta

Nickname: Theta

Founded: January 27, 1870 at  
Depauw University

Colors: Black and Gold

Symbol: Kite

Philanthropy: CASA (Court  
Appointed  
Special Advocates)

National Website:  
[kappaalphatheta.org](http://kappaalphatheta.org)

Chapter Website: [pennstate.kappaalphatheta.org](http://pennstate.kappaalphatheta.org)

Instagram: @psu\_theta

# KAΘ





# Kappa Delta

*"Let us Strive for That Which is Honorable,  
Beautiful, and Highest"*

## About Kappa Delta

Nickname: KD

Founded: October 23, 1897 at  
Longwood University

Colors: Olive Green and Pearl

Symbol: Nautilus Shell, Dagger,  
Diamond Shape

Philanthropy: Prevent Child Abuse  
America and Girl Scouts of the USA

National Website: [kappadelta.org](http://kappadelta.org)

Chapter Website: [psu.kappadelta.org](http://psu.kappadelta.org)

Instagram: @kd\_psu







# Kappa Kappa Gamma

"Aspire to Be"

## About Kappa Kappa Gamma

Nickname: Kappa

Founded: October 13, 1870 at  
Monmouth College

Colors: Dark Blue and Light Blue

Symbol: Key

Philanthropy: Reading is  
Fundamental

National Website: [kappa.org](http://kappa.org)

Chapter Website:  
[psu.kappa.org](http://psu.kappa.org)

Instagram: [@kkg\\_psu](https://www.instagram.com/kkg_psu)

# KKΓ





# Phi Sigma Sigma

"Once, Always"

## About Phi Sigma Sigma

Nickname: Phi Sig

Founded: November 26, 1913 at  
Hunter College

Colors: King Blue and Gold

Symbol: Sphinx

Philanthropy: School & College  
Readiness

National Website:

[phisgmasigma.org](http://phisgmasigma.org)

Chapter Website:

[phisgmasigmapsu.com](http://phisgmasigmapsu.com)

Instagram: @phisig\_psu







# Pi Beta Phi

“Cultivating Sincere Friendship”

## About Pi Beta Phi

Nickname: Pi Phi

Founded: April 28, 1867 at  
Monmouth College

Colors: Wine and Silver Blue

Symbol: Arrow and Angel

Philanthropy:

Read > Lead > Achieve

National Website: [pibetaphi.org](http://pibetaphi.org)

Chapter Website:  
[pibetaphi.org/psu](http://pibetaphi.org/psu)

Instagram: [@psu\\_pibetaphi](https://www.instagram.com/psu_pibetaphi)

# ΠΒΦ





# Sigma Delta Tau

"one Hope of many People"

## About Sigma Delta Tau

Nickname: SDT

Founded: March 25, 1917 at  
Cornell University

Colors: Café au Lait and Old Blue

Symbol: Torch

Philanthropy: Prevent Child Abuse  
America and Jewish Women  
International

National Website: [sigmadeltatau.org](http://sigmadeltatau.org)

Chapter Website: [facebook.com/  
PSUsigmadeltatau](https://facebook.com/PSUsigmadeltatau)

Instagram: @Sigdelt\_PennState







# Sigma Kappa

“one Heart, one Way”

## About Sigma Kappa

Nickname: Sig Kap

Founded: November 9, 1874 at  
Colby College

Colors: Soft Lavender and Deep  
Maroon

Symbol: Dove and Heart

Philanthropy: Alzheimer's  
Association

National Website: [sigmakappa.org](http://sigmakappa.org)

Chapter Website:  
[psu.sigmakappa.org](http://psu.sigmakappa.org)

Instagram: @sigmakappapsu







# Zeta Tau Alpha

“seek the noblest”

## About Zeta Tau Alpha

Nickname: Zeta

Founded: October 15, 1898 at  
Longwood University

Colors: Turquoise and Gray

Symbol: Crown

Philanthropy: Breast Cancer  
Education and Awareness

National Website: [zetataualpha.org](http://zetataualpha.org)

Chapter Website:  
[psu.zetataualpha.org](http://psu.zetataualpha.org)

Instagram: @zta\_psu

# ZTA





# Sigma Sigma Sigma

## Faithful unto Death

About Sigma Sigma Sigma

Nickname: Tri Sigma

Founded: April 20th, 1898 in Farmville,  
Virginia

Colors: Royal Purple and White

Symbol: Sailboat

Philanthropy: Sigma Serves Children and  
the March of Dimes

National Website: [jointrisigma.com](http://jointrisigma.com)

Chapter Twitter: @TriSigmaPennSt

Chapter Instagram: @trisigmapennstate







- ASSOCIATE CHAPTER -  
*Omega Phi Alpha*

"Today's Friends, Tomorrow's Leaders,  
 Forever in Service"

## About Omega Phi Alpha

Nickname: O Phi A

Founded: June 15, 1967

Colors: Baby Blue, Dark Blue, and  
 Gold

Symbol: Chevron

Philanthropy: Mental Health

National Website:  
[omegaphialpha.org](http://omegaphialpha.org)

Chapter Website: [psuophia.wix.com/omega-phi-alpha](http://psuophia.wix.com/omega-phi-alpha)

Instagram: @ophia\_psu





- ASSOCIATE CHAPTER -  
*Phi Sigma Rho*

**"Together We Build the Future"**

### About Phi Sigma Rho

Nickname: Phi Rho

Founded: September 24, 1984 at  
 Purdue University

Colors: Wine Red and Silver

Symbol: Pyramid

Philanthropy: The Leukemia and  
 Lymphoma Society

National Website: [phisigmarho.org](http://phisigmarho.org)

Chapter Website: [psrpennstate.wix.com/phi-sigma-rho-psu](http://psrpennstate.wix.com/phi-sigma-rho-psu)

Instagram: @phisigmarho\_psu







- ASSOCIATE CHAPTER -  
*Sigma Alpha*

## "Sisters in Agriculture"

### About Sigma Alpha

Nickname: SA

Founded: January 26, 1978 at  
Ohio State University

Colors: Emerald and Maize

Symbol: Baby Bull

Philanthropy: Agriculture in  
the Classroom

National Website: [sigmaalpha.org](http://sigmaalpha.org)

Chapter Website: [sigmaalphapsu.wixsite.com/sigmaalphapsu](http://sigmaalphapsu.wixsite.com/sigmaalphapsu)

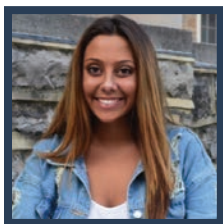
Instagram: @sigmaalpha\_psu



# Panhellenic Executive Board

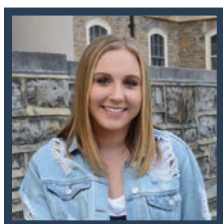


# Panhellenic Executive Board



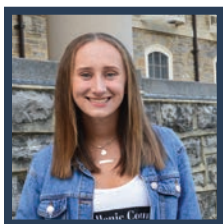
## PANHELLENIC PRESIDENT, COURTNEY RODRIGUES

Courtney is a senior majoring in Journalism with dual minors in Business and Digital Media Trends and Analytics. Her hometown is Shelton, Connecticut. Her previous panhellenic experience consists of her serving on Delta Zeta's Standards Board, being a member on Delta Zeta's Social Media Committee, and ultimately being the 2017 Chapter President for Delta Zeta. In her free time Courtney likes to hangout with her friends and give back to the Penn State Community. As Panhellenic President, Courtney is the voice of the 17 NPC and 3 associate chapters at Penn State. She also serves to represent Panhellenic to the University's community and form relationships between Panhellenic and other student organizations. Courtney's goals for her term are to create and ensure a positive, inclusive, and safe Panhellenic community. She strives to be a support system for all students and highlight all of the amazing things our Panhellenic women do!



## EXECUTIVE VICE PRESIDENT, MORGAN HEISER

Morgan is a senior majoring in Psychology with dual minors in Human Development and Family Studies, and Child Maltreatment and Advocacy Studies. She is from Skillman, New Jersey. Morgan served as Gamma Phi Beta's Administrative Vice President, Junior Panhellenic Delegate, Pledge Class President, and served on various committees including standards, recruitment, THON, and more within her sorority! Outside of greek life Morgan loves to read about the beauty and fashion industry, and go to the beach. This past Summer Morgan also went to Florence, Italy to study abroad! As EVP, Morgan serves as right hand to the President. She also runs the Junior Panhellenic Committee to empower the future leaders of the community. Along with other duties, she also organizes, coordinates, and executes Panhellenic Pride Week in the Fall. During her term Morgan wants to inspire the future leaders of Panhellenic. Through the newest members in Junior Panhellenic, she wants to help give them the skills necessary to become strong, independent women!



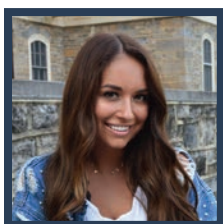
## VICE PRESIDENT FOR STANDARDS, SAMANTHA SCHMITT

Samantha is a senior double majoring in Finance and Sociology. She is from Horsham, Pennsylvania. In her chapter, Alpha Delta Pi, Samantha served as Junior Panhellenic Delegate, Scholarship Chair, and ultimately on her Executive Board as Director of Standards and Ethics in 2017. In her free time, she likes to cheer on Penn State Football, travel, go to the beach, and spend time with friends. As VP for Standards, Samantha serves to keep the Panhellenic community



# Panhellenic Executive Board

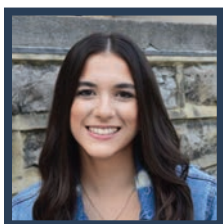
accountable and safe through the enforcement of the Panhellenic policies. So far she has rewritten various policies to realign them with our values and goals for the community. Samantha wants to make a lasting impact for our Greek community by guiding chapter leaders in how to make the best decisions for their chapters and serve as a support system for all chapters!



## **VICE PRESIDENT FOR MEMBERSHIP, Brooke Martinez**

Brooke is a senior from New Jersey majoring in Journalism with a minor in Digital Media Trends and Analytics. Throughout her time in Kappa Delta, Brooke has been a Greeks Care Participant and served as Recruitment Chair. Outside of greek life Brooke makes YouTube videos for Lifestyle and Beauty! Brooke also holds an internship at the Nittany co-op during the school year. As VP for Membership

Brooke oversees and coordinates all Panhellenic Association Recruitment activities for over 1,500 new members and the 16 active chapters. Throughout her term Brooke is striving to cultivate a Panhellenic community with a strong sense of unity among all chapters, as well as creating a welcoming and comfortable environment for new members!



## **VICE PRESIDENT FOR COMMUNITY DEVELOPMENT, Gabrielle Lombardo**

Gabrielle Lombardo is a Senior from Royersford, Pennsylvania. She is majoring in Health Policy and Administration with dual minors in Information Sciences in Technology and Political Science. In her chapter, Omega Phi Alpha, Gabrielle served as Vice President for Community Development and Programming Chair. She also received the Outstanding Chapter Service Director Award from

Omega Phi Alpha's Nationals! In her free time Gabrielle likes to spend time with her friends and family and focus on volunteer work. As VP for Community Development, Gabrielle is the liaison between the Panhellenic community and the State College community. She coordinates and hosts various community outreach events and oversees Panhellenic chapters' community service and community outreach. Overall, Gabrielle wants to ultimately connect Panhellenic women with community service they are passionate about while strengthening Panhellenic's relationship with the State College community!



## **VICE PRESIDENT FOR PROGRAMMING, Taylor Tamaccio**

Taylor is a Junior from Palm Beach, Florida. She is majoring in Supply Chain Management with a minor in Sociology. She served as Kappa Alpha Theta's Junior Panhellenic Delegate for the 2017-2018 term. Outside of greek life, Taylor likes to hangout with her friends and go to the movies. Her duties as VP for Programming

# Panhellenic Executive Board

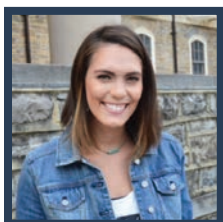
include clarifying the needs of the Panhellenic community and subsequently finding various speakers to converse with our members. She also plans and executes Month of the Scholar, Badge Day, and National Hazing Prevention Week. Taylor's primary goal throughout her term is to bring in speakers that will predominantly benefit the greek community as a whole.



## VICE PRESIDENT FOR COMMUNICATIONS, *Alexandra Seelso*

Alexandra is a Senior majoring in Marketing with a minor in Digital Media Trends and Analytics. She is from Oradell, New Jersey. In her chapter, Zeta Tau Alpha, she served as the Junior Panhellenic Delegate. In her free time Alexandra likes to hangout with her friends, especially when it is nicer out and she can spend her time outside.

As VP for Communications, Alexandra's main role is to promote greek life through local media while creating innovative ideas for marketing campaigns to advertise the Panhellenic Council. She also develops and executes branding and imaging campaigns through the use of social media. Alexandra's goals for her term include positively advertising the Panhellenic community by portraying Panhellenic's core values and showcasing all of the progressive things our members are doing which exude these over arching values.



## VICE PRESIDENT FOR MEMBERSHIP DEVELOPMENT, *Nicole Drouillard*

Nicole is a Junior majoring in Accounting with a minor in Digital Media Trends and Analytics, and International Business. Nicole's hometown is San Antonio, Texas. Within her chapter of Delta Phi Epsilon, she was her New Member Educator. Outside of Greek Life, Nicole loves to work out and is involved in THON. As VP for Membership Development she selects and educates the Pi Chis and ensures that they feel supported.

She also works hand-in-hand with the VP for Membership to make sure that recruitment runs smoothly. Throughout her term she would like to make sure that the Pi Chi's are educated properly with the new rules of affiliated recruitment!



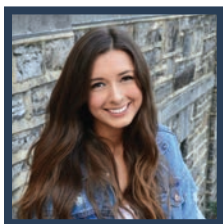
## VICE PRESIDENT FOR WELLNESS, *Halle Smith*

Halle is a Senior from West Chester, Pennsylvania. She has bio-behavioral Health major with a minor in Global Health. Within her chapter of Kappa Kappa Gamma, she was Vice President for Organization as well as Philanthropy Chairman. In her spare time she likes to travel, volunteer, go to the beach, and stay active. As VP for Wellness, Halle is in charge of delivering all resources and

programs – health and wellness related – to Panhellenic women. She is also in charge of

# Panhellenic Executive Board

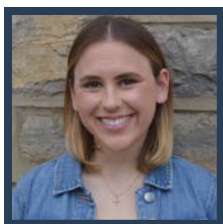
Women's Empowerment Week and Wellness Week. Halle coordinates greek involvement in programs such as Greeks CARE, Stand for State, and the Body Project. She wants to continue to offer more events that are related to wellness that Panhellenic women enjoy going to.



## **VICE PRESIDENT FOR FINANCE, Maria Lawrence**

Maria is a Senior from Bridgewater, New Jersey. She is majoring in Accounting. Before being on Panhellenic she was Vice President for Finance and served on the Budgeting Committee for Kappa Delta! Outside of Greek Life she loves to go for runs as well as spend time with her family and friends. As Vice President for Finance she makes and maintains the Panhellenic budget and helps each officer attain their goals financially.

She also sits on the Board of the Nittany Co-Op (a purchasing co-operative in State College). She hopes to contribute to the growth of the Panhellenic Community by ensuring financial astuteness. She hopes to reduce unnecessary expenditures and redistribute money to areas that positively impact our community.



## **VICE PRESIDENT FOR ADMINISTRATION, Elizabeth Napolitano**

Elizabeth is a Senior from Gwynedd Valley, Pennsylvania. Her major is Labor and Employment Relations and her minor is French and Francophone studies. In her chapter of Alpha Xi Delta, Elizabeth was Vice President. Outside of Greek Life, she likes fitness and exercise and also volunteers at Centre County Paws. Her position as VP for Administration entails organizing philanthropy and

OrgSync throughout the individual chapters. Throughout her term she wants to focus on increasing involvement in philanthropy and creating fun and engaging community events for chapters.





# HAPPY RECRUITMENT!

You are one step closer to joining an organization that will change your life for the better. Sorority life is one of the best choices you can make at Penn State! If you still have questions about joining a sorority, e-mail [Membership@pennstatephc.org](mailto:Membership@pennstatephc.org) or stop by 218 HUB and talk to one of the Panhellenic Executive Board Members. Good luck in your college career, and we hope to see you at Orientation!

Fraternally,  
The Panhellenic Association Executive Board 2018

## FOLLOW US!



[pennstatephc.org](http://pennstatephc.org)



[@pennstatephc](https://www.instagram.com/pennstatephc)



[@pennstatephc](https://twitter.com/pennstatephc)



[facebook.com/  
pennstatephc](https://facebook.com/pennstatephc)



[pinterest.com/  
pennstatephc](https://pinterest.com/pennstatephc)



[pennstatephc.  
tumblr.com](https://pennstatephc.tumblr.com)



[vSCO.co/pennstatephc/  
images/1](https://vSCO.co/pennstatephc/images/1)

# Notes:



HAVE ANY QUESTIONS?  
Tweet us @pennstatephc

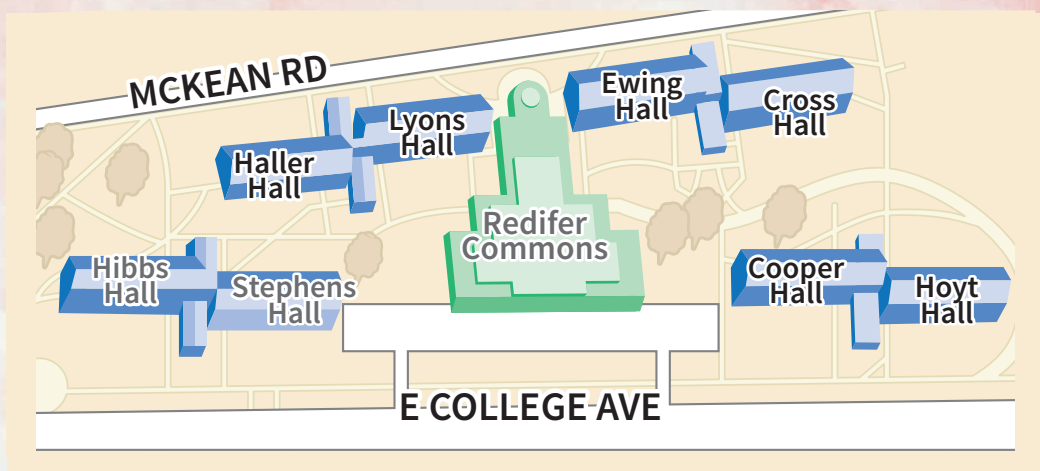
## LEARN MORE ABOUT SORORITY RECRUITMENT:

- INVOLVEMENT FAIR  
TUESDAY, OCTOBER 2 FROM 7 PM-10 PM.  
IN HERITAGE HALL, HUB
- FIND US ONLINE AT [WWW.PENNSTATEPHC.ORG](http://WWW.PENNSTATEPHC.ORG)

RECRUITMENT ORIENTATION  
JANUARY 12

You will receive an email  
confirming your exact  
date, time, and location  
upon registration.

LAST DAY TO REGISTER FOR RECRUITMENT  
MONDAY DECEMBER 31ST AT 5 PM



### Haller

1. Phi Sigma Rho
2. Kappa Delta
3. N/A
4. Gamma Phi Beta

### Lyons

1. N/A
2. Alpha Phi
3. Alpha Xi Delta
4. Kappa Alpha Theta

### Ewing

1. Omega Phi Alpha  
Sigma Alpha
2. N/A
3. Delta Zeta
4. Kappa Kappa Gamma

### Cross

1. N/A
2. Delta Phi Epsilon
3. Alpha Delta Pi
4. Pi Beta Phi

### Cooper

1. N/A
2. Alpha Omicron Pi
3. Sigma Delta Tau
4. Delta Gamma

### Hoyt

1. N/A
2. Phi Sigma Sigma
3. Zeta Tau Alpha
4. Sigma Kappa

REGISTER FOR PANHELLENIC RECRUITMENT AT [WWW.PENNSTATEPHC.ORG](http://WWW.PENNSTATEPHC.ORG)